

St Margaret's



Admissions

2024 INFORMATION



Mentoring
Program



Ros Curtis
Principal



Georgi Eadie

Preparing confident,
compassionate,
capable women
able to contribute in
a global community





From the Principal

Welcome to St Margaret's and thank you for considering our school for your daughter.

For 129 years, St Margaret's has been a leader in providing quality education for young women and girls. At the heart of our school you will find the values and wisdom of our founders, the Sisters of the Society of the Sacred Advent, who established St Margaret's in 1895. The Sisters undertook to empower young women and prepare them not only for tertiary admission but, most importantly, to live a life imbued with good and generous character. These threads of our founders have been woven into the tapestry of the school throughout its history.

St Margaret's combines a steadfast affection for this wonderful tradition and its legacy with a commitment to future-focused innovation across all teaching and learning areas and life-long scholarship.

Today, our mission is to prepare capable, compassionate, confident young women, who are able to contribute significantly to a global society.

We are a local school with a global outlook, committed to preparing students to be globally ready. There are many opportunities for students to be exposed to global experiences and thinking, such as the school's Global Exchange Program, which offers Year 10 students the chance to study abroad.

When your daughter attends St Margaret's, she will experience a broad, balanced and flexible curriculum in state-of-the-art facilities, within a warm and nurturing environment.

The school has a strong academic record, providing extensive and personalised support, including a tailored program for high achieving scholars, athletes and performers, called the Flyers Program. All students are inspired to participate in life beyond the classroom through our comprehensive sport, music and arts programs.

St Margaret's has a proud boarding history. Generations of women from across Queensland and the world have walked through the doors of our boarding house and into the care of our committed and specialist boarding staff. St Margaret's boarders are integral to our school community and bring diversity, energy and another level of experience to all our girls.

The active and friendly parent body, along with experienced and dedicated staff, contribute to St Margaret's warm and welcoming community.

We would love to show you our school. Please contact our Admissions team on +61 7 3862 0777 to arrange a personal tour on any working day, or if you have any questions. We hold an Open Day and Open Morning each year and I encourage you to also join us on those occasions.

I commend our school to you and invite you to consider how a St Margaret's education will offer your daughter both a personalised learning journey and a gateway to the world.

We look forward to seeing you.

Ros Curtis

BA(Hons), DipEd, MLitSt, MEd(Leadership and Management), ASDA, FACELQ, FIML, GAICD



Ros Curtis
Principal



SCHOOL PRINCIPAL
OF THE YEAR
NON-GOVERNMENT



SCHOOL PRINCIPAL OF THE YEAR
NON-GOVERNMENT

Our Vision

To always be an outstanding day and boarding school for girls.

Our Mission

In a supportive Christian environment, reflecting the philosophy of the Sisters of the Society of the Sacred Advent, St Margaret's Anglican Girls School aims to provide excellence in teaching and learning within a broad, balanced and flexible curriculum complemented by other school activities, preparing confident, compassionate, capable women able to contribute in a global community.

Our Motto

Per Volar Sumata (Born to Fly Upwards)


Our Commitment

At St Margaret's, we ensure our decisions and programs reflect a lived and intentional focus on the Philosophy of the Sisters of the Society of the Sacred Advent.

Our Envisioned Future

By the end of 2025, St Margaret's will be known as an innovative school which has a global outlook and encourages aspiration and resilience in its students. St Margaret's will continue to promote academic excellence, provide a wide range of extra-curricular activities and offer relevant and inspirational student wellbeing programs focused on developing the skills and strengths students need to meet the challenges and opportunities for post-school life.



A student in a school uniform and straw hat is seen from the back, looking out over a city skyline. The student's hand is raised to the brim of the hat. The background shows a dense urban landscape with various buildings under a clear sky.

The school's six core values are born from our Christian faith through our Anglican tradition - spirit, inclusivity, integrity, courage, respect and passion. These are embedded in every endeavour that the students undertake.

Our Values

Spirit

A St Margaret's girl will value and demonstrate an enthusiasm for the school, our faith tradition, and our environment. The St Margaret's spirit is in all students and is there for life. It is a thread that connects St Margaret's girls with each other.

Inclusivity

A St Margaret's girl knows that every single person reflects the image of God and deserves to be treated with dignity. She demonstrates inclusivity by acting with compassion and charity, celebrating the gifts of every individual.

Integrity

A St Margaret's girl is known for her ethical behaviour. She is honest and reliable and acts with integrity.

Courage

A St Margaret's girl has strength of character and confidence in doing what is right. She is a part of a long line of women of faith who have had the courage to embrace challenge and change.

Respect

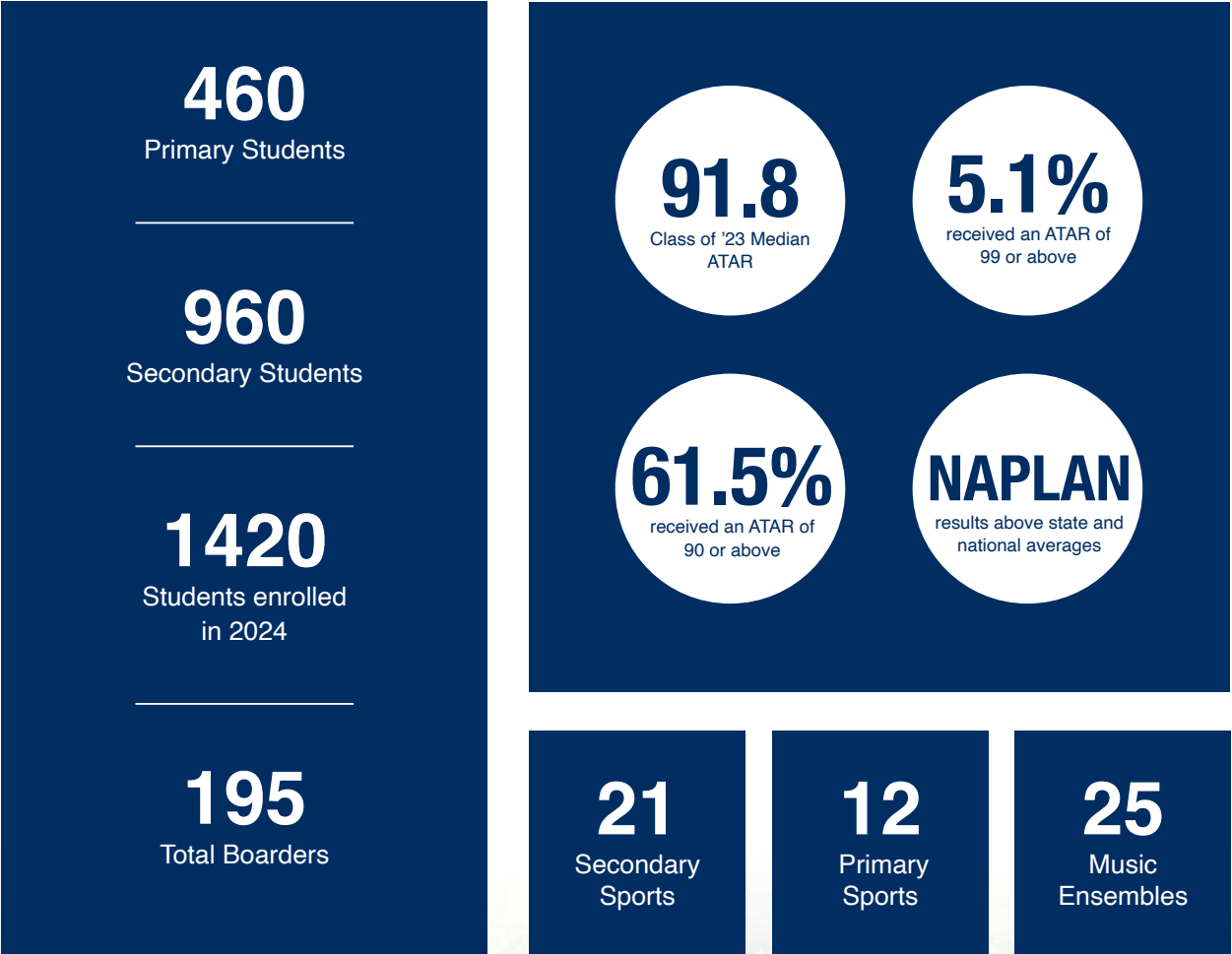
A St Margaret's girl has respect for herself and others. She understands that she is a member of a diverse community, and she takes responsibility as a team member to care, support and cooperate with others.

Passion

A St Margaret's girl expresses gratitude for the gift of life. She has a positive outlook on life that drives the commitment and persistence necessary for learning and achievement.

St Margaret's Snapshot

St Margaret's is an independent day and boarding school for girls in Pre-Prep to Year 12 and boys in Pre-Prep. Boarding is available from Years 5 to 12.



Faith

A St Margaret's girl shares the Christian message through welcoming and embracing all and living with spirit, inclusivity, integrity, courage, respect and passion.

She demonstrates her faith by service to those members of the wider community who need assistance.

We are a living faith community, welcoming many groups from within and beyond the school. We endeavour to share God's love through example, compassion, hope and charity. We demonstrate our faith through service to the wider community and those who need assistance. The school chapel stands as a constant reminder of the Christian faith, which is at the core of our values and the St Margaret's philosophy.

Our chaplain is responsible for worship, which is set within the Anglican tradition and shaped by the history and presence of the Sisters of the Society of the Sacred Advent.

There is a regular pattern of worship within the life of the school, which includes year level services, primary chapels, special liturgies, Prayer Space, and whole school services. There are regular opportunities for students to partake in the Eucharist. The students fill the Chapel with much light and life throughout each term.

An invitation is extended for all, both in the primary and secondary schools, to attend family year level services of Holy Communion. Students play a very active role in all school liturgies, some filling the roles of sacristans (Year 12) and chapel assistants (Year 6).

Religious and Values Education lessons (On Being Human in Year 7) are an integral part of the curriculum throughout the school. Students are encouraged to contribute to informal discussion, question and answer sessions, and debates on moral and ethical issues. The RVE curriculum reflects on what it means to be a benevolent human and assists in nurturing the emotional and spiritual formation and wellbeing of students.

The Year 4 curriculum introduces students to the primary Christian sacraments of Baptism and the Eucharist (Holy Communion). This unit of study assists in the preparation from Admission to Holy Communion. Girls from Years 4 to 6 who wish to be admitted to Holy Communion take part in a special evening service in Term 2 of the school year. For girls in Years 7 to 12, Admission to Holy Communion takes place in family services of the annual Confirmation service. Baptism is also available for students who have not yet been baptised and wish to be. Confirmation is offered to those who wish to make their own mature commitment to the Christian faith, with the Bishop joining us for this annual service.



Pre-Prep

St Margaret's Pre-Prep is a co-educational, five-day program that engages and extends students through problem solving, exploration, creativity and hypothesising. The program operates during the school term between the hours of 8:20am and 2:30pm and provides a safe, nurturing environment for girls and boys turning four by 30 June of the year of enrolment.

The Pre-Prep curriculum can be best described as a child-centred approach balanced with structured inquiry learning into literary and numeracy development. The program is inspired by the Reggio Emilia philosophy and based on the principles outlined in the Early Years Learning Framework (EYLF) and the Queensland Kindergarten Learning Guidelines (QKLG).

The EYLF describes the principles, practice and outcomes essential to support and enhance young children's learning from birth to five years of age, as well as their transition to school. The EYLF has a strong emphasis on play-based learning and recognises the importance of communication and language (including early literacy and numeracy), and social and emotional development.

St Margaret's Pre-Prep has been rated Exceeding National Quality Standard under the National Quality Framework (NQF) across all seven quality areas that are important outcomes for children.

The QKLG identifies learning and development areas which are used in programming and planning. These are underpinned by the elements of thinking and communicating:

- Identity – building a confident self-identity through independence, perseverance and trust.
- Connectedness – building relationships respecting diversity and environments
- Wellbeing – building a sense of physical, social and emotional wellbeing
- Active Learning – engaging and exploring learning
- Communicating – exploring and engaging in numeracy and literacy in personally meaningful ways.

Outdoor Classroom Day enables the adventurous Pre-Preps to spend longer blocks of time exploring and learning in the natural environment surrounding their indoor classroom. Outdoor learning helps to develop the students' connection to the natural world, teach sustainable practices and instils a lifelong sense of environmental stewardship.

One of the unique benefits of St Margaret's Pre-Prep program is the student's access to specialist teachers and the big school's facilities including a state-of-the-art sports precinct.



Music

Specialist music educators support students to develop their musicality through beat and movement and to develop their listening skills. Students learn to identify a variety of music elements including fast/slow, high/low, loud/soft and show these changes by reacting through body movement, identifying them in listening excerpts and playing them on instruments.

Languages

Learning a language in early childhood education helps to develop students' problem solving and critical thinking skills as well as develop an awareness and appreciation of cultural differences. Students in Pre-Prep at St Margaret's learn to communicate in Japanese including greeting one another, introducing themselves, naming their favourite things, games, stories and songs.

STEM Learning

STEM learning is highly valued at St Margaret's for the skills of the future it develops. The Pre-Prep STEM learning experience is stewarded by a specialist teacher within a dedicated STEM hub in the primary school. Within the Atelier, students can tinker, explore, discover, invent and create, becoming inquirers as they wonder and discover why things happen and how things work.

Wellbeing

Nurturing a safe culture of care and support is of great importance at St Margaret's and Pre-Prep students are supported with age-appropriate strategies to build their sense of physical, social and emotional wellbeing. They also benefit from being a member of the wider school community, promoting a connectedness and sense of belonging.

Pre-Prep students can access the school's OSHC (before and after school care and vacation care) located in the primary school.





Primary School (Prep to Year 6)

Our primary school is a community of learners that fosters relationships with parents, students and staff. Students are empowered to be responsible, take initiative and be active participants in their learning.

With our philosophy focused on the development of the whole child, students are supported to flourish academically, physically, spiritually, socially and emotionally.

The primary curriculum is comprehensive and balanced with a focus on the following areas: English, Mathematics, Humanities, Science and Religious and Values Education. Specialist teachers guide creative and enriching learning experiences in Music, The Arts, Modern Languages (Mandarin and French), STEM and Physical Education.

Differentiated Learning

From Pre-Prep, teachers use differentiated teaching as a strategy to ensure all students experience challenge, success and improved learning.

The primary Core Plus Cluster program is a manifestation of this commitment to differentiation and comprises two components: the Core program, taught to students in their particular year level, and the Cluster program, where students learn within vertical groups based on like abilities and needs. These flexible groupings are clustered in Prep to Year 2, Years 3 and 4, and Years 5 and 6.

Literacy and Numeracy

St Margaret's students are supported to develop strong foundational literacy and numeracy skills, critical building blocks for their future learning.

Specialist teachers such as a Literacy Coordinator/Coach and Mathematics Specialist bring a higher level of expertise to literacy and numeracy development in the primary years.



The school has developed a custom, systematic, cumulative and explicit approach to the teaching of literacy in the early years, which embodies the most recent research and the most effective elements from a range of approaches to and theories of early literacy instruction. The program is fast paced, whilst also being highly responsive to individual needs, and student learning is closely monitored and tracked across the early years of primary with opportunities to support/extend students as necessary.

STEM Learning

Learning in STEM (Science, Technology, Engineering and Mathematics) is highly valued at St Margaret's. Early STEM education sparks students' innate curiosity about the world and develops future-focused skills, including creativity, problem solving and innovative thinking.

From Pre-Prep, students participate in timetabled STEM lessons with a specialist teacher in the Atelier, a space dedicated to tinkering, design and construction, robotics, environmental studies, media studies, science and materials technology.

Wellbeing

We believe the social and emotional wellbeing of students is an important priority and aim to support and develop student wellbeing through a range of programs including service learning, leadership, online safety and personal development programs.





Secondary Learning (Years 7 – 12)

In keeping with our philosophy of personalised learning, we offer a broad, balanced and flexible curriculum, designed to provide an optimal learning environment for each student.

We are focused on teaching our girls HOW to learn, with specialised programs based on effective learning techniques and critical and creative thinking skills. This leads to a deeper understanding of subject matter, which students can apply across their academic subjects and then transfer to alternative contexts.

Students in Years 7 to 10 are offered a wide range of subjects, providing a breadth of experience in all disciplines. In Years 11 and 12, students are able to specialise in areas of interest with a view to tertiary study and post-secondary interests.

St Margaret's is a multi-pathway school. As well as our rigorous academic program, we offer students a portfolio of pathway options which includes Vocational Education and Training (VET) programs in their study. This means that each individual can engage in the program which best meets her needs. The school works extensively with Queensland TAFE Colleges and registered training organisations such as Axial Training to ensure that we provide a range of opportunities, including school-based traineeships, Certificate III and Diploma level qualifications.

Detailed Curriculum Handbooks are available on our website. Below is a summary of subjects studied.

Years 7 and 8

Students study a broad core curriculum of English, Mathematics, The Arts, Science, Humanities, Health and Physical Education, Modern Languages, Religious and Values Education, Digital Design and On Being Human (Year 7 only).

Science of Learning is a program designed to assist Year 7 St Margaret's students to understand how their brain and learning works. The program readies Year 7 students for the rigour of secondary schooling, providing them with strategies for goal setting, note taking, advice for organising time at home and how to manage assessment. The Science of Learning Program sits within Year 7 Form class time.

Year 9

Students study core curriculum subjects including English, Mathematics, Science, History, Health and Physical Education, and Religious and Values Education. Additionally, students select three elective subjects (one Major and two Minors). Electives are organised into Majors (four lessons a week) and Minors (three lessons a week), allowing for a breadth of experiences to be offered to students.

Students choose from Major electives: French, Chinese (Mandarin), Music, Drama, Visual Art, STEM, Geography, English as an Additional Language, and Minor electives: Geography, Food and Design, Economics and Entrepreneurial Studies, Legal Studies, Physical Education, Digital Technologies, Music, Drama, Visual Art and STEM.

Year 10

Students study core curriculum subjects including English, History, Health and Physical Education, and Religious and Values Education. For Mathematics and Science they have the options of selecting 10.1 or 10.2. Additionally, students select two electives and a Certificate II qualification.

Students choose from electives: French, Chinese (Mandarin), Music, Drama, Visual Arts, Geography, English as an Additional Language, Food and Design, Economics and Entrepreneurial Studies, Legal Studies, Physical Education, Digital Technologies and STEM. Maths Extension and English and Literature Extension are also offered on an invitation basis only.

Students choose from a Certificate II in Health Support Services, Hospitality, Sport Coaching or Engineering Pathways or a Certificate III in Agriculture.

Year 10 students have the opportunity to apply to participate in the school's Global Exchange Program, which allows them to study abroad for a term.

Years 11 and 12

Students will choose one of the following QCE pathways:

1. Australian Tertiary Admissions Rank (ATAR) pathway – students selecting this pathway must select five or six General subjects from the following groups:

Group A (students choose at least one subject): English, Literature, English as an Additional Language

Group B (students choose a minimum of three and a maximum of five subjects): Chemistry, Economics, Mathematical Methods, Specialist Mathematics, Physics, Digital Solutions, French, Music, Chinese, Modern History, Biology, Legal Studies, Accounting, Geography

Group C (students choose a minimum of 0 and a maximum of two subjects): Drama, Ancient History, General Mathematics, Visual Art, Physical Education, Design

2. Portfolio pathway – students selecting this pathway are not eligible for an ATAR. All students must select three General subjects from the following groups:

Group A (choose one subject): English

Group B (choose 1 Diploma): Diploma of Business, Diploma of Project Management

Group C (choose two ATAR subjects from Groups B & C)

Group D: Special Project – a school-based program will be offered to provide additional access to work, apprenticeship and Vocational Education Courses

Learning Enhancement

Learning enhancement encompasses the various practices utilised at St Margaret's to ensure every student is given the opportunities necessary to make meaningful progress in their learning. It is relevant to all students, but particularly those with specific needs, in the areas of enrichment, extension or support. St Margaret's approach to learning enhancement is founded on the belief that all students have the right to an education which is challenging and rewarding, and allows for all students to make meaningful progress. There are many aspects to the learning enhancement program.

Embedded Classroom Differentiation

Differentiation is a key pillar of the St Margaret's Quality Teaching and Learning Framework and as such is expected in all learning contexts at the school. It relates to every element of the learning environment and needs to shape all interactions with students. Ultimately differentiation means dealing with each student and her needs in the most effective way for her. It involves ensuring that the curriculum is accessible to each girl regardless of her particular level of development or understanding.



Primary Learning Enhancement

In the primary school the focus of learning enhancement is on early identification and intervention in the areas of extension and support. A Response to Intervention Model is followed:

	Extension	Support
Tier 1	Differentiated classroom curriculum, incorporating extension. Cluster Program	Differentiated classroom curriculum incorporating adjustments, embedding individual student's needs. Cluster Program. Learning enhancement teacher or teacher-aide support in class
Tier 2	Enrichment and extension activities at school and provided by outside agencies	Small group intervention in literacy and numeracy
Tier 3	Alternate pathways; Whole and subject acceleration. Independent research projects. Pathway is determined by off-level testing, educational psychologist report and IOWA report	1:1 intervention with learning enhancement teacher or allied health professional such as occupational therapist, speech language pathologist or educational psychologist. Referral is determined by diagnostic testing

Learning Plans

Learning plans are developed for students with a diagnosed disability. This plan outlines adjustments the student requires to access the curriculum and all teachers are issued with these plans in order to make these adjustments.

English as an Additional Language (EALD)

In the primary school, students with EALD learn English by being immersed in the class curriculum, with learning needs met on a case by case basis. On arrival, the EALD student's linguistic level is assessed and reported using the NLLIA Bandscales (2nd Ed.) A profile of the student's levels in four macro skills – reading, writing, speaking and listening – is shared with her teachers.

Secondary Learning Enhancement

Academic Enrichment - The Flyers Program

Students in Years 7 to 10 who are achieving at a very high standard and/or not being appropriately challenged within the classroom disciplines are identified during Term 1 and invited to be part of the academic enrichment program, called the Flyers Program. This program is designed to engage students at a level significantly beyond usual classroom learning experiences through their academic rigour, transdisciplinary approach and independent learning requirements. (see page 13)

Classroom Program to Support Secondary School Learners

Years 7 and 8 Humanities Learning Enhancement (HumLE)

Humanities Learning Enhancement is a support subject, where assistance is provided with study skills, assistive technology and support for assessment. This subject is offered on an invitation only basis to students who require additional support in their learning.

Students still complete the core work of the Humanities subject, but it is simplified and with a reduced workload, and at least two lessons per week are provided to the students to catch up on homework, get support with difficult subjects and assessment tasks, and learn about different technology and study strategies that may assist them with their academic workload.

Years 9 and 10 History Learning Enhancement (HisLE)

History Learning Enhancement is a support subject that offers a modified and simplified History Curriculum for two lessons a week with the *remaining* three timetables lessons to be used to further support students in their learning. This subject is only offered on an invitation only basis to selected students who require additional support for their learning. Due to a modified curriculum, students who choose to enrol in this subject will not be eligible to select History as a subject in Years 11 and 12.

EAL Elective to support English Language Learners

Students who require support with English as an Additional Language are able to engage in classes specifically for these purposes. Entry to these classes is based on a needs assessment by the Learning Enhancement Team.

Individualised Learning Program

Students with specific, identified needs are provided with a personalised Learning Plans. These plans are created in partnership with the student, parents and the Learning Enhancement team.

The Personalised Learning Plan is tailored to ensure support and necessary adjustments are provided to the student to foster effective learning experiences for all students. These plans are shared with school staff, including teachers, to ensure appropriate support for each student. The Learning Plan undergoes an annual review by Learning Enhancement Case Managers, shaped by both internal and external assessment processes. This review ensures that the plan remains responsive and adaptive, providing continuous support throughout each student's educational journey at St Margaret's.

Supervised Study Sessions

St Margaret's provides complimentary Supervised Study Sessions for day students, 12 years and over, to complete their homework under the supervision of tutors.

Tutors supervise the study/homework sessions in the senior library from Monday to Thursday every week of term (apart from the first and last weeks). The sessions run from 5pm to 7.30pm, with students having the option of purchasing dinner from the boarding house for \$12.50 (at approximately 6pm).

Parents can feel comfortable knowing that their daughters are completing their homework and assignments under supervision, in a safe environment. For students attending these sessions after an afternoon of sport, transport is available to and from Windsor Park. For those staying on after school to attend the homework sessions, the senior library is open until 5pm prior to the commencement of the study sessions.

How to Book

While the study sessions are free of charge, bookings are limited to 25 students and should be made in advance to ensure a place is available. Bookings are to be made through Flexischools. If dinner is required, payment must be paid at the time of booking.



The Flyers Program

St Margaret's understands the commitment and dedication it takes to achieve great things. Our Flyers Program supports outstanding scholars, athletes and performers to follow their passion, while successfully balancing all other aspects of their education.

Academic Flyers Program (Years 7 to 10)

The Flyers Program for outstanding scholars provides students with opportunities to extend themselves academically and embrace intellectual challenge. The program's objective is to inspire, encourage and extend students through:

- extension electives in the fields of English and Mathematics
- Science, Technology, Engineering and Maths (STEM) programs
- workshops with experts in various fields, for example writing workshops with published authors
- participation in competition and experience days.

Students are selected based on the recommendation of Heads of Faculty or one of the Academic Deans in consultation with the Deputy Principal. Selection is based on records of high achievement and demonstrated ability.

Sports and Performance Flyers Program

The Flyers Program for outstanding athletes and performing artists assists students to achieve both their academic and extracurricular goals through personalised learning. The program assists students through:

- independent learning options
- mentoring
- access to specialist seminars and workshops
- practice and training opportunities
- communication with key staff and coaches
- networking with professionals and organisations
- scholarship and grant application assistance
- academic care
- peer to peer meetings.

Each student reports to a Flyers mentor, such as the Head of Performance, Head of Faculty – The Arts, or Director of Sport.

Students must be performing at an exceptional level to apply. Potential music participants should be performing at the level of the Queensland Youth Orchestra; athletes must be state or national representatives in the relevant semester; and candidates in other fields will only be accepted if they are performing at comparative eligibility levels to sport and music.

Further information about Sport or Performance Flyers Program is available online at www.stmargarets.qld.edu.au. For further information and to enquire about entry into the Flyers Program, please contact Ms Karen Gorrie, Deputy Principal, via phone 3862 0771 or email kgorrie@stmargarets.qld.edu.au.



Academic Advising

St Margaret's has established an innovative, award-winning Academic Advising Program for students in Years 9 to 12.

Students are assigned to an academic advisor, who they meet with in small groups, twice a week during timetabled academic advising sessions.

With assistance from their advisor, students set academic goals and track their progress through our Learning Analytics Program. The sessions also provide another opportunity to check in on a student's general wellbeing.

When the girls are not with their advisor, they have a block of time to use appropriately. It provides them with the responsibility and freedom to practise skills of self-monitoring and self-regulation.

Academic advising gives students the tools and confidence to personally evaluate their results and take ownership of their own learning and its outcomes.

Through the student ownership of school data, the mentoring from a staff member and the increasing conversation between teachers/students and student/parent, we aim to increase the girls' learning capacities and enable them to gauge their own learning.

St Margaret's Plus (StM+)

StM+ provides a summary of activities that maps the skills students have learnt outside/alongside the academic program. This platform draws together the activities and the associated skills to create the overview. The purpose of StM+ is to identify and document the essential skills students develop outside the classroom through participating in extracurricular activities.

StM+ aims to develop a whole picture of students by promoting engagement and well roundedness to enhance employability outcomes for students as they graduate.



Mentoring Program

Mentoring Program

St Margaret's unique Mentoring Program gives Years 11 and 12 students the opportunity to be matched with appropriate mentors from the St Margaret's alumni community in the field they are aspiring to study or enter into when they graduate. What sets the program apart is its disciplined structure and the fact its highly personalised to each student. The mentees meet with their mentors virtually four times a year, and after each session, students are supported by specialist school staff to reflect on their session and prepare for the next. Mentors are sought out based on the career pathways students are intending to pursue. This program was the recipient of an Innovative Schools Awards in 2022.

Continuous Reporting

St Margaret's regularly reports on progress to students and their parents in Years 5 to 12 through our Continuous Reporting Program.

Through a student portal, students can view and reflect on their results and feedback, their GPA, and teacher comments.

They can then utilise this relevant and timely feedback to identify steps to take to improve, set goals and evaluate their progress.

This process promotes effective self-management, where students can take responsibility and ownership of their learning, with their advisors assisting them to develop this independence.

Primary Reporting

The assessment processes and schedule in the primary school align with the reporting procedures in order to provide a comprehensive overview of student achievement and to track progress over time, along with enhancing ownership of learning and goal setting. Summative assessment generally occurs at the end of a unit of work or at set intervals during the year, but can also occur throughout a unit of work. This form of assessment informs the allocation of grades and achievement standards on reports. Formative assessment is often referred to as assessment FOR learning. It is assessment that occurs daily, weekly and termly to inform the next steps in learning. This assessment takes many forms and informs both teachers and students of their next learning goals and targets. More detailed information regarding reporting and assessment in the primary school can be found in the Primary Handbook.





Outdoor Education

Outdoor education can offer students life-changing experiences including:

- the development of initiative, self-reliance, co-operation, decision making, creative problem solving and leadership
- opportunities for deep personal and social learning creating strong relationships
- the improvement of brain resilience through the progressive, repeated exposure to custom-built outdoor challenges
- increased cognitive ability and adaptability
- communication, teamwork, problem solving, self-management, planning and organising
- applying technology, learning, initiative and enterprise.

Our Outdoor Education Program is a compulsory component of the curriculum for students in Years 7 to 11. Run in conjunction with QCCC Expeditions and Character Builders, each student is encouraged to take risks in a supportive environment, so she can learn about her strengths and weaknesses.

Such challenges can extend her personal limitations and bring success physically, emotionally and socially. The skills and aptitudes our girls acquire through the Outdoor Education Program are transferable; these programs assist students to apply what they have learnt on the camps to other aspects of their lives.

While the overall goals for each level may be similar – for example in Years 8 to 10 it might be to develop initiative, co-operation, decision making, creative thinking and leadership skills – the specific aims of the camps will vary greatly. For example, in Year 7 there is focus on friendship and team building.

Curriculum content can also be embedded into the expedition programs, value adding to both the outdoor experience and the opportunity to explore the curriculum beyond the classroom.

St Margaret's Outdoor Education Program is as follows:

Year Level	Number of Nights	Location	Activities
Year 7	2	QCCC – Mapleton Centre at Mapleton in the Sunshine Coast Hinterland – two nights in a dorm	Theme: Fun and friendship On-site activities include canoeing, archery, low ropes, giant swing, indoor rock climbing, outdoor cinema and bonfire.
Year 8	2	QCCC – Mapleton Centre at Mapleton in the Sunshine Coast Hinterland – two nights in a dorm	Theme: Australia cross-curriculum priorities of Aboriginal and Torres Strait Islander Culture and Environmental Sustainability. On-site activities include: <ul style="list-style-type: none"> • Walkabout a pristine rainforest property sampling bushfood while learning about traditional land and management techniques. • Enjoying dance, didgeridoo and song • Learning survival skills from First Nations people who have thrived on the world's harshest continent. • Learn about Aboriginal perspectives on their interaction and cooperation with other cultures from history and today. • Be challenged to see major historical events from an Aboriginal worldview. • Hands-on activities with Aboriginal Art and Craft options.
Year 9	2	QCCC – Mt Tamborine – two nights in a dorm	Theme: Challenge and Teamwork Students are challenged to see the benefit of pushing themselves out of their comfort zones and boundaries in the great outdoors, through fun and interactive challenges. Activities include team building games, adventure ropes and forest walks.
Year 10	2	QCCC – Noosa – survival experience – two nights in tents	Theme: Leadership and Teamwork Students have an opportunity to embrace adventure and experience personal growth and to learn basic survival skills in the bush. Activities involve camping, hiking and canoeing

Primary School Camp Program

The primary school offers a sequential, structured program for students in Years 3 to 6 focusing on respect and responsibility for self, others and the natural world. Each year's program builds on the previous years by increasing the number of days and building on activities that require more self-regulation. The outdoor experiences not only provide opportunities to interact with nature, but also provide challenges and risks for the girls in a safe environment. The camps in each year level contribute to the development of a girl's risk-taking disposition which sets the foundation for the challenge of learning.

St Margaret's primary school camp program is as follows:



Year Level	Number of Nights	Activities and Venue	Theme	Description
Year 3	0	Mudjimba Apex Camp Australia Zoo Beach Games – Caloundra Dinner – St Margaret's Boarding House	Exploring the environment the fun way	We believe students have the opportunity to play in and explore the natural environment. Students will have an opportunity to have fun in the outdoors by taking part in activities including a visit to Australia Zoo, beach games, craft activities and dinner in the Boarding House.
Year 4	1	Alexandra Headland Bli Bli Aqua Park Alexandra Headland Beach Surf awareness and rock climbing Tenpin bowling at 'Suncity Tenpin'	Away with your friends	We believe that this experience is a progressive step for the students to become independent individuals. The Year 4 camp emphasises personal growth and self-management. The students develop confidence, team skills and awareness of the beach environment.
Year 5	2	Tamborine QCCC (3 days): Team building activities problem solving and initiative games Creative art Rainforest hike Night fire stories School: Leadership activities (2 days)	Beginning Leaders	The girls are encouraged to take small steps to meet far-reaching challenges, while learning to live in harmony with the environment and other people. The girls participate in environment education, team and individual physical challenges. This program is also the basis for the leadership program. It is important for students to develop a strong sense of the individual as a leader, as well as a deeper understanding of their potential as a team.
Year 6	3	Canberra with visits to: Electoral Education Centre War Memorial National Museum National Gallery Questacon Australian Institute of Sport Parliament House (New and Old) National Museum and Gallery Portrait Gallery High Court National Capital Exhibition Dinosaur Museum	Leadership Today	The Year 6 trip offers authentic learning as the students experience their classroom learning in context. A strong component of this trip is to engender the students' role in the community and gain an understanding of their citizenship in the democratic process.





Beyond the Classroom

At St Margaret's we believe education is more than an academic result; it is an holistic learning experience, and art, music and sport are an important part of a well-rounded education. Cultural, community and sporting activities promote leadership qualities, and develop teamwork skills, responsibility and resilience in a fun environment. The emphasis is on participation, fair play, self-regulation and initiative.

Our students are encouraged to develop their curiosity, find a passion and seek knowledge in all areas of life, through the many and varied extracurricular activities and clubs available at school.

Music

Our Music Program offers students a broad range of opportunities through which they can enjoy and experience music. The program encourages students to reach their highest potential from beginners through to those studying for their music exams. Students can participate in one of 25 string, band or choir ensembles.

Private Music Tuition

Specialist private music teachers provide tuition to students from Prep to Year 12 at an additional cost. Tuition is available for the following:

- Violin, Viola, Cello, Double Bass, Guitar, Bass Guitar
- Trumpet, Trombone, Baritone Horn, Euphonium, French Horn, Tuba
- Flute, Oboe, Clarinet, Bassoon, Saxophone
- Piano, Percussion (including drum kit), voice and AMEB theory

International Music Tours

An international music tour is generally offered every two years, dependent on the level of interest. The 2024 music tour will travel to Prague, Vienna, Salzburg and Bratislava. These tours include international performance opportunities, workshops and masterclasses for travelling students.

	String Ensembles	Band Ensembles	Choral Ensembles	Contemporary Ensembles
Core Ensembles	Tutti Strings (Beginner level) ▼ Amati Strings (Approx. AMEB Grade 1-2) ▼ Stradivari Stings (Approx. AMEB Grade 3-5) ▼ Chamber Strings (Approx. AMEB Grade 6+) (<i>Girls in Chamber Strings must also participate in Stradivari Strings</i>)	Chaseley Concert Band (Beginner) ▼ Jackson Wind Ensemble (Intermediate level) ▼ Sister Helen Wind Symphony (Advanced level)	Piccolo (Prep-Year 1) ▼ Serenata (Years 2-3) ▼ Belle Voci (Years 4-6) ▼ Encorah (Years 7-12)	Highly Strung Primary School Rock Band ▼ Secondary Rock Bands
Elective Specialist Ensembles	Beath String Quartet (Primary) Sculthorpe String Quartet (Secondary)	Brass Ensemble Stage Band Flute Ensemble Clarinet Ensemble Saxophone Ensemble Elayne Jones Percussion Ensemble	Chorale (Years 5-6) Volare (Years 7-8) Exultate (Years 9-12)	

Elective Specialist Ensembles

To participate students must be a part of the core program.

Performing Arts

Dance

Involvement in dance not only develops fitness and coordination, but also teaches discipline, commitment and team work, while enhancing memory, posture and musical awareness. Students in Years 7 to 12 can audition for St Margaret's dance troupe, *Ballare*. The aim of the dance troupe is to provide students with an opportunity to develop their technical and performing arts skills and build friendships with students across various year levels. Weekly rehearsals are held to learn and practise routines to be performed at school events such as the MAYO Arts Festival, assemblies and the School Musical.

Drama

Private Speech and Drama tuition is available for students in Years 2 to 12. The program is designed to develop communication, presentation and performance skills in a fun, supportive environment. Students explore drama, mime, improvisation, poetry, prose and public speaking, developing their imagination, confidence, clear speech, vocal and facial expression and love of literature. Students can strive for their AMEB Speech and Drama exams or participate in one of the many performance opportunities throughout the year.

School Musical

A school musical is produced every second year and there are several opportunities for students to be involved both through performance on stage, in the orchestra pit or even behind the scenes. The production is staged in a professional venue such as La Boite Theatre, providing students with the complete performance experience.



Sport

St Margaret's has a long, proud history of women in sport. Our program offers 21 sporting activities. The school was one of three founding members of the Queensland Girls Secondary Schools Sports Association (QGSSSA), an association that continues today. St Margaret's is also a member of Andrews Cup, the Brisbane Schoolgirls' Rowing Association (BSRA), Brisbane Water Polo Association Inc (BWPI) and Downey Park Netball Association (DPNA).

Students also have the opportunity to compete in state secondary school competitions.

Sports on offer include:

- AFL
- Athletics
- Artistic Gymnastics
- Badminton
- Basketball
- Cricket
- Cross Country
- eSports
- Football
- Hockey
- Lifesaving
- Netball
- Club Netball
- Rhythmic Gymnastics
- Rowing
- Swimming
- Club Swimming
- Tennis
- Touch Football
- Volleyball
- Club Water Polo

Primary Sports

St Margaret's Primary School competes with nine other schools in the Queensland Girls Primary Independent Schools competition known as Andrews Cup. Eleven sports are played during the school week, as listed below.

Term 1	Term 2	Term 3	Term 4
Core Sports: Andrews Cup			
Swimming Cross Country	Cross Country Athletics	Athletics	Swimming
Elective Sports: Andrews Cup			
Touch Football Tennis	Soccer Netball	Gymnastics Cricket Basketball AFL Soccer	AFL Gymnastics Cricket
Club Sports:			
Netball	Netball	Netball	Water Polo

Eligible students for the different sports include:

- Girls in Years 2 to 6 can participate in athletics, swimming, cross country and gymnastics
- Years 4 to 6 can participate in basketball, cricket, netball, soccer, tennis and touch football
- Years 5 and 6 can participate in AFL

Secondary Sports

St Margaret's offers a holistic extracurricular program, complete with 21 different sport programs and 15 cultural and community activities. Each program aims to provide an enriching experience, developing a student's sense of competence, confidence, connection and character.

Core Sports	Athletics	Cross Country	Rowing	Swimming	
Summer Sports	Cricket	AFL			
Autumn Sports	Basketball	Soccer	Touch Football		
Winter Sports	Hockey	Netball	Tennis	Volleyball	
Gala Sports	Artistic Gymnastics	Badminton	eSports	Lifesaving	Rhythmic Gymnastics
Club Sports	Club Netball	Club Swimming	Club Water Polo		

Clubs and Activities

St Margaret's has a variety of thriving clubs and activities giving students the opportunity to broaden their horizons and discover their true interests and passions.

Holiday Clubs (user pays)

SmART workshops (selected week long art workshops)

Secondary Clubs and Activities

Astronomy	Philanthropy Group
AUSLAN	Private Speech and Drama
Chess	Robotics Club
Dance	School Musical (biennial)
Debating	smART Club
Digital Art Club	STEM Club
Duke of Edinburgh Award	Student Representative Council
Environmental Committee	Toc H
Maggies Podcast	

Primary Clubs

Clubs	No Cost/ User Paid	Term Available	Pre- Prep	Prep	Year 1	Year 2	Year 3	Year 4	Year 5	Year 6
Art and Design										
Art Workshop	User Paid	2 to 4			Term 3 & 4	Term 3 & 4	Term 2 & 4	Term 2	Term 1	Term 1
Communication										
Writing Club	No Cost	3 and 4					Semester 1			
Debating	No Cost	2 and 3								
Japanese	No Cost	1 to 4								
Public Speaking	No Cost	2 and 3								
Maggies Podcast	No Cost	1 to 4						Term 4		
Thinking Outside the Box										
Robotics	No Cost	1								
Homework	No Cost	1 to 4								
Minecraft	No Cost	4								
Chess	User Paid	1 to 4								
Garden Club	No Cost	2 to 4								
Strategy Club	No Cost									
User Paid Sport										
Brisbane Roar – Soccer	User Paid	2								
Club Netball	User Paid	1 to 3								
Little Moves Dance	User Paid	1 to 4								
Magnettes Netball	User Paid	4								
Net Set Go Netball	User Paid	2								
Rise Tennis	User Paid	1 to 4								
Speed and Agility Training	User Paid	1 to 4								
Swim Club	User Paid	2 and 3								
Water Polo	User Paid	4 and 1								
Yoga and Mindfulness	User Paid	1 to 4								

Service Learning

St Margaret's has a strong culture of philanthropy and aims to inspire students to begin a life-long commitment to giving through activities that have a positive impact on the communities in which they live and will, one day, work. Through the many philanthropic endeavours in which the school is involved, it is intended that students will improve their understanding of current community issues and, in doing so, build important relationships between the school and the community. Philanthropy at St Margaret's is driven by selected senior students who form the Philanthropy Group, known as Philanthropy Leaders. These girls collaborate with other groups throughout the school to raise awareness and funds for a chosen organisation within the broader community.

St Margaret's service learning opportunities also involve Year Level Service Learning Projects as well as philanthropy groups such as Toc H. Service is recorded in the Secondary Service Learning Passport and St Margaret's Plus. Year 11 students participate in Sony Camp and students drive other initiatives throughout the year such as the annual Ponytail Project.

Leadership through Service in the Primary School

Our service-learning program is addressed through the Leadership Through Service passport Years 4 – 6. Students are issued with a passport which they complete individually. Each year level has a focus program that is reflective of their understanding and is used as a tool to enhance and enrich classroom learning.

Year 4: Gift of Giving time (individual)

Year 5: Leadership 'I Can' report card (individual)

Year 6: Cornerstone Project (year level)

Cornerstone Project - The aim of the project is for students to plan and conduct a project that contributes to the wider community. As a year level, the students investigate and identify a community group in need (guided by the Archbishop's New Year message). Students work collaboratively in small groups to complete a different component of the project.

Global Experiences

Global Tours

St Margaret's regularly offers international tours across a range of activities and interests. These can be cultural/languages/history trips, music touring, NASA space trips, or are of a more recreational nature such as a Japan skiing tour. Each seek to broaden our girls' horizons and give them a greater global perspective of the world in which they live.

Primary Japan Tour

Every second year, the primary school offers a cultural trip to Japan for Years 5 and 6 students. The tour commences with two nights in Tokyo, followed by a bullet train to Kobe where the students stay within the Konan University complex. The students' trip also includes visits to Kyoto, Nara, Hiroshima and Miyajima Island, Osaka and Universal Studios. The highlight is the visit to our sister school, Konan Elementary School in Kobe, where students experience a day in the life of a Japanese child and participate in drumming, calligraphy, Kendo and classroom activities.

Year 10 Global Exchange Program

The signature Year 10 Global Exchange Program enables our girls to acquire and further develop new skills in problem solving, independent decision-making and social poise; expand their cultural and ethnic awareness; enhance their passion for learning; and become exceptional ambassadors of the program overseas and in the St Margaret's community.

The program promotes the vision of the school in providing unique opportunities for students to participate in global citizenship in the context of school and family life and encourages active demonstration of the six core values of St Margaret's – spirit, inclusivity, integrity, courage, respect and passion.

Successful applicants have the opportunity to study at one of 12 schools in Canada, USA, Germany, Japan, New Zealand and South Africa.

Study Tours

Students are offered the opportunity to buddy with an international student visiting St Margaret's on a study tour.



Student Wellbeing

Pastoral Care Program

St Margaret's Pastoral Care Program is designed to prepare confident, compassionate and capable women who are able to contribute in a global community. We know that positivity and gratitude have an immense impact on our emotional wellbeing, thus creating an environment where we all can flourish.

We believe student wellbeing sits at the heart of effective learning; is the central component of high quality education; relies on the themes of connection and belonging in the school context; and is the responsibility of all members of the community, not just those identified as having pastoral care responsibilities.

The Student Wellbeing Framework articulates the beliefs, aims and practices relating to the facilitation of student wellbeing at the school. The framework ensures that our student wellbeing programs aim to:

- establish a connection between each student and the school which promotes a sense of belonging
- assist students to become dynamic and passionate members of the broader community
- build a culture that celebrates difference and diversity
- promote the development of empathy and compassion within each individual
- foster students' social, emotional, spiritual, ethical and physical development in order to reduce risk-taking behaviours and minimise harm
- imbue students with an understanding of their power as authors of their lives.

The Student Wellbeing Framework is aligned with The St Margaret's Way and the school's values. The St Margaret's Way was developed to guide our school community in the way in which we strive to do things; the way in which we seek to treat people throughout our community; and the way in which we aim to serve others.

Whilst it is our firm belief that student wellbeing is the responsibility of all members of our community, we do have staff members dedicated to developing the social and emotional aspects of each student's education including a Dean of Students, School Chaplain, School Psychologist, and the Heads of Year, as well as dedicated Pastoral Care/Wellbeing Coordinators for international and boarding students.



House System

St Margaret's house system forms part of our focus on student wellbeing. Each of our eight houses takes part in sporting, cultural and community activities, where the emphasis is on fostering a sense of community and belonging. The house system generates integration and interconnectedness across all year levels, encouraging the formation of friendships and fostering both a strong house identity as well as strengthening whole school spirit. The house system also provides opportunities for developing leadership and teamwork skills, learning cooperation, and putting service to others before personal ambitions.

Anti-Bullying

In both the primary and secondary schools, regular events and activities are held to heighten awareness of the issue of bullying amongst students. There is a very clear anti-bullying policy and documented procedures which are followed should any child experience bullying.





Boarding

St Margaret's is the only full-time girls boarding school in Brisbane. Our boarders have a significant impact on the life of the school, contributing to the wonderfully diverse school community.

Our first three students enrolled in 1895 were boarders and, since then, St Margaret's has spent 129 years educating generations of women from rural, regional and remote areas of Queensland, Australia and the world.

The boarding house is located in the heart of the school grounds, nestled in the leafy suburb of Ascot, with gardens and wonderful city views. It is a busy place with a warm and friendly atmosphere, built on the values of respect, consideration and honesty.

The school welcomes boarders from Years 5 to 12, with a recently opened wing dedicated to our youngest residents (Years 5 to 7). Many of our housemothers have experience in the teaching sector, so their personalised supervision of prep-time, along with current teaching staff, provides excellent academic support for our boarders.

Our ancillary staff are also highly qualified: the on-site team of experienced chefs prepare over 1000 restaurant quality meals every day and our modern Health Centre is staffed by registered nurses.

Strong friendships are forged between day and boarding students, with many invitations exchanged for boarding house sleep overs, home visits and weekends.

Boarding House Information

Our Head of Boarding, Lesa Fowler, has spent 30 years working and teaching in Australian boarding schools. She oversees the care of the 190 plus girls living in the boarding house, along with 9 housemothers, and is responsible for ensuring the experience at St Margaret's is rewarding and fulfilling. Supporting the Head of Boarding is a Head of Junior House, Head of Senior House and a Wellbeing Coordinator.

Supervision

The role of all boarding house staff is to act as carers for the girls and the emphasis is on working together as a team – parents, boarders and staff – to meet the needs of boarders and their families. Housemothers provide 24-hour supervision of the boarders, with a dedicated team sleeping over each night. They supervise study, monitor the girls' academic progress, communicate with their teachers and provide extra academic support. The housemothers are also responsible for the social, emotional, physical and spiritual wellbeing of all the girls.

Study

Boarders prep is held every evening after dinner, from Monday to Thursday. Prep is supervised by St Margaret's teachers, who provide specialised tutoring for students. Many of our housemothers have education experience and work alongside the teaching staff. This personal approach contributes to the longstanding history of academic success in the boarding house.





Student Wellbeing

All boarding house staff are well-qualified in their roles to care and support the girls. Housemothers provide the day to day care of the girls and really get to know them well. There is one housemother to each year level and they are with them for the whole year. A Wellbeing Coordinator supports the housemothers in this pastoral role. In addition to the support of the staff, a structured Big Sister Program sees Years 10 and 11 students taking on the guided responsibility of mentoring newcomers to the house, to help them navigate the early challenges of settling into boarding and ensuring they have an 'older sister' to call on. All new boarders also partake in a formalised transition program, which assists in settling into boarding.

Family Involvement

At St Margaret's we always welcome family visits and understand these can happen at varying times. Parents are encouraged to share a meal with the girls in the dining room whenever they are in town. Boarding families have always been enthusiastic members of the St Margaret's community. There are many special events, including the Boarding Parent Cocktail Party. The Boarders' Support Group was formed in 1991 and aims to promote a close relationship between boarder parents, school staff and parents of day girls.

Regular communication via email, newsletter, and phone calls keeps families connected with their daughter's achievements and progress. We also have a private Facebook group for boarding parents that allows regular, "everyday" photographs of the girls to be shared.

Activities/Health Centre

Our Activities Coordinator regularly organises a wide range of events to keep the girls entertained and happy during non-school times. These activities also help to encourage a sense of community within the boarding house and are a chance to enhance relationships across all year levels. The activities include movie nights, dances, socials, trips to the beach, community activities, themed dinners, treasure hunts and many more.

General medical attention is provided to all boarders at the school, in the Health Centre or at the doctors' rooms. The Health Centre is staffed by two registered nurses and is open Monday to Friday from 7:15am, and on the weekends from 4:00pm – 8:00pm, with a nurse on call all weekend.

Day/Boarder Weekend

Each year, boarders have the opportunity to take a day girl home with them for the weekend. This is an opportunity for our boarders to show the day girls where they live and what they do when they are home. Day girls gain a better understanding of the diversity within boarding and boarders certainly benefit from the strengthening of bonds with their peers.



Outside school hours care



Outside School Hours Care

Before and after school and vacation care is available for students in Pre-Prep to Year 6. Children are engaged in a wide variety of activities such as themed days, drama, sport, art and craft, music, dance indoor and outdoor activities, cooking and science.

The OSHC program is held in a dedicated OSHC room situated on the school campus and is run by a team of skilled child care professionals. The program reflects and values the importance of play and follows the National Quality Standards "My Time, Our Place" framework.

A healthy food menu is served as part of the program.

Pre-Prep and Prep students are escorted to their classrooms in the mornings and to the OSHC room in the afternoon. OSHC educators can escort students to after school extra-curricular activities as required.

For further details and pricing information visit www.stmargarets.qld.edu.au or email oshc@stmargarets.qld.edu.au.



Getting to St Margaret's

There are many methods of transport to and from St Margaret's available for students, with train, bus and ferry from various parts of Brisbane among the popular modes of transport.

Train

Albion train station is approximately 1km walking distance from the school.

Bus

Council bus services depart from nearby Sandgate Road.

Hornibrook Bus Service runs from Redcliffe to connect with the train from Sandgate.

Red and White Coaches operate a number of school runs in the northern suburbs. More information is available at www.redandwhitecoaches.com.au.

Ferry

A bus transports St Margaret's students to Racecourse Road, Hamilton Central, close to the Bretts Wharf ferry before and after school.

Other

Roma Street Transit Centre and the International and Domestic Airports are both located 10 minutes away by car.

Visit Translink online or phone 13 12 30 to find the best route to and from the school using public transport.

St Margaret's Private Bus Service

St Margaret's provides a dedicated bus service to assist families to transport children to and from school during term time. The school has partnered with Belbaker Bus Charter, a premier coach and charter company, to provide this service.

Children in Pre-Prep and Prep wishing to catch the bus may only do so if accompanied by a sibling of at least 10 years of age. If for any reason the sibling is not on the bus, the younger student may not board the bus.

Students in Years 1 to Year 4 may only travel on the bus if the parent/guardian signs and returns the "Agreement for Students Year 1 to Year 4 travelling on the Private Bus" form.

Parents with children in Years 1 to Year 4 will need to sign a form agreeing to the following conditions:

- Parent/guardian will be at the bus stop to drop off and pick up their child at least 10 minutes prior to the scheduled time.
- Parent/guardian will assist child onto and off the bus.
- If a parent/guardian is not at the bus stop when the bus arrives, the driver will not allow the student to disembark from the bus. The student will be returned to the School (boarding house) and the parents will be contacted to collect their child from the boarding house.
- A fee of \$50 will be incurred for returning the child to the school. This will be charged to the student's account.
- If a sibling over the age of 10 is accompanying the child in Year 1 to Year 4, this is sufficient.



Please let the driver know the age of your child. The driver will ensure younger children are seated at the front of the bus.

Students in Years 5 to 12 are able to use the St Margaret's bus using either their student ID card which has been linked to a Flexischools account or by purchasing a 10 ticket pass from Flexischools and collecting the pass from the Finance Officer.

The Belbaker fleet is maintained and cleaned to a high standard and features air conditioning and 3-point seatbelts. We are able to constantly track the progress of the coaches through state of the art GPS tracking, security cameras and communication tools, ensuring students arrive safely and on time. The buses are solely for St Margaret's students and staff. One St Margaret's branded coach and one Belbaker coach provide morning and afternoon services to the following areas:

- Bulimba service – Bulimba, Hawthorne, Norman Park, New Farm, Teneriffe, Newstead, Hamilton and Ascot (Racecourse Road near Bretts Wharf)
- The Gap service – The Gap, Bardon, Ashgrove, Newmarket, Wilston, The Grange, Gordon Park, Wavell Heights, Nundah, Woolloowin and Eagle Junction

The service costs \$5.80 each way on both routes. For students using the service from near Brett's Wharf the cost is \$4.30 each way, and from Eagle Junction train station the cost is \$3.00 each way.*

Students are able to use their Student Card to purchase their daily bus ticket. The Gap and Bulimba buses are fitted with an iPad which will scan your child's student card and this will charge your Flexischools account for an individual bus trip. Importantly, funds must be available on the student card and the student card must be linked to your Flexischools account.

**subject to change*

Enrolment Process

St Margaret's welcomes applications for enrolment for entry into any level.

Visit Us

The best way to learn more about St Margaret's is to come and see us, chat to our staff and students, and tour the campus. There are several ways you and your daughter (or son - for Pre-Prep) can experience St Margaret's.

St Margaret's runs two open events a year, an Open Day held in early March and an Open Morning in mid-August.

Alternatively, you can schedule a personalised tour with one of our admissions team members.

Head of Admissions | Mrs Fiona Spooner | Tel: 3862 0861

Primary | Mrs Jodi Fisher-Grimshaw | Tel: 3862 0838

Secondary/Boarding | Mrs Judy Robinson | Tel: 3862 0762

Email: admissions@stmargarets.qld.edu.au

The enrolment process is activated approximately three years prior to your child's intake year at St Margaret's.

Step 1 – Experience St Margaret's

There are many ways to learn more about St Margaret's. Our website is a great place to start; you can connect with us on social media (via the links on this site); read or download our Prospectus (or request to have one mailed to you); arrange a personalised tour with our Admissions team; or attend an Open House event. You can also arrange a taster day – we welcome any student who wishes to experience St Margaret's for a Day.

Step 2 – Application

Submit an Application for Admission form. You can do this online or request a paper copy. The application must be accompanied by a non-refundable application fee and birth certificate. International students should submit the International Student Application for Admission form found in the international admissions section.

Step 3 – Interview

Students and parents will be invited to attend an interview with a member of the Educational Leadership Team within three years of the nominated year of entry. Copies of a student's most recent school report, NAPLAN results and any other relevant information will be requested prior to the interview. Skype interviews are available by request.

Step 4 – Offer

Offers are made following the interview process. The Principal forwards a Letter of Offer to successful applicants. Please note, St Margaret's is a non-selective school – there are no tests to sit and offers are not made based on previous academic reports – however, offers are made at the sole discretion of the Principal.

Step 5 – Acceptance of Offer

To accept the offer of a place at the school, parents sign a Written Agreement and other relevant forms and pay the non-refundable confirmation fee to secure their child's place at the school.

Enrolling During the School Year

Subject to availability, St Margaret's may offer places to students wishing to enrol at any time throughout the school year. The same enrolment process outlined above occurs.

Enrolment Fees (non-refundable)

Application for Admission (domestic): \$250
Confirmation of Enrolment: \$1,250



Orientation

St Margaret's offers several orientation activities to support your daughter's transition to school whether it be starting in Pre-Prep or any other year level.

PRE-PREP

Students entering Pre-Prep will have the opportunity to attend an orientation morning in Term 4 the year prior to commencing Pre-Prep. Whilst the orientation date and time will be communicated to parents closer to the day, a sample schedule from previous sessions is below:

8:45am Registration in the Pre-Prep Centre

9:00am Explore the Pre-Prep environment

9:30am Shared parents and children morning tea

10:00am Outside activities (children)
Information presentation (adults)

10:30am Families depart the Advent Centre



PRIMARY

Students commencing in Prep to Year 6 at St Margaret's will be invited to attend an orientation day in Term 4 of the year prior to commencing at the school. The orientation schedule generally involves an information session for parents including an address by the Principal and Head of Primary and classroom activities for the students.

Buddy Program (inspired by the Alannah and Madeline Foundation)

Each new student is allocated a buddy from her year level who will assist in welcoming her into the class, the primary school and the wider St Margaret's community.

The St Margaret's buddy program teaches students the values of caring for others, friendliness, respect, valuing difference, including others and responsibility. The program aims to create positive behaviour, as well as build new students' self-esteem, connectedness, social skills, trust and sense of community.

To apply to be a buddy, current students supply a written application and agreement signed by their parents. Depending on the timing of the enrolment of the new student, the buddy will communicate with the new student before the commencement of the new year.

SECONDARY

Year 7 Transition

The Transition Program allows students who are current Year 6 St Margaret's students to gain insight to some aspects of the secondary school prior to moving into Year 7. The Year 6 girls are invited to a Year 7 Step Up Day in October. This experience allows the Year 6 students to see the type of work completed in Year 7, as well as meet some teachers and ask questions about the types of experiences they will enjoy as secondary students.

In addition to this internal transition program, all prospective Year 7 students attend a Welcome Day and Activities Day at St Margaret's during Term 4 in the year preceding entry to Year 7. This provides an opportunity to bring together students who are current Year 6 St Margaret's students and Year 6 students from other primary schools, to meet their form class teacher and Head of Year, and to learn a little about our school prior to their commencement in Year 7.

Years 8-11 Welcome Day

Welcome Day is held for all new students entering Years 8 to 11 to support their transition to St Margaret's. It is usually scheduled for the final weeks of Term 4. On this day, students will have the opportunity to meet their form teachers, buddies and attend classes.

Boarders Sleepover

As part of our orientation program we offer a New Boarder Sleepover for students in Years 7-11 to assist with the transition to boarding. This opportunity usually occurs towards the end of November, the year prior to your daughter commencing at St Margaret's.

Enrolment Fees (Domestic)

Enrolment Application Fee \$250

A non-refundable fee is payable per student at the time of submitting a formal Application for Admission.

Enrolment Confirmation Fee \$1,250

A non-refundable confirmation fee is payable per student at confirmation of enrolment. No refund of this fee shall be made by the school should a student fail to utilise a confirmed place. This fee is not deducted from tuition fees.

Tuition Fees 2024

	Per Term	Per Annum	Per Annum** (after discount)
Pre-Prep	\$3,500***	\$14,000	\$13,720
Prep - 2	\$5,631	\$22,524	\$22,187
Years 3-5	\$5,937	\$23,748	\$23,392
Year 6	\$6,258	\$25,032	\$24,657
Years 7-11	\$7,259	\$29,036	\$28,601
Year 12	\$9,679*	\$29,036	\$28,601

* Year 12 are billed across three terms only (Terms 1 to 3)

** Discount applies when the annual fee is paid in full by 22 January 2024

***Includes 600 hours free kindy

The School has an all-inclusive fee policy. The fee covers the cost of all compulsory activities including tuition, QGSSSA sport, technology, year level camps, class excursions and a range of facilities used in the course of a normal school day.

The fee does not include textbooks, stationery, specialised equipment/materials or optional activities such as co-curricular sporting camps and tours, Global Exchange, overseas tours or private music/speech and drama lessons or instrument hire, all of which are optional activities and the parent's responsibility.

Please note: Year level camps are a compulsory part of the school curriculum and if a student does not attend for whatever reason, there is no reduction to the Tuition Fee.

Boarding Fees 2024

	Per Term	Per Annum
Years 5-11	\$6,528	\$26,109
Year 12	\$8,703*	\$26,109

* Year 12 students are billed across three terms only (Terms 1 to 3)

A \$110 Boarders Support Group Levy, which is applicable to boarders, is not included in fees and is invoiced separately on behalf of the Boarders Support Group. A boarder transport levy of \$180 is charged in Term 1. This covers transport on boarder activities. Year 12 boarding students will be charged a \$200 bond in Term 1 to cover incidentals incurred during Term 4. Any credit remaining at year end is refundable.

Fee Discounts

A discount of 1.5% will be applied to the tuition fee if payment of the student's annual fee has been received in full on, or prior to, 22 January 2024. Fee discounts are reviewed by School Council annually and subject to change.

Fee Concessions

- Bursaries for daughters of Anglican clergy members
- Sibling Discounts (tuition fees only) - when two or more siblings attend St Margaret's at the same time, a concession discount of 5% for the second, 10% for the third and 15% for any subsequent siblings will apply.
- Parents are reminded that all fee concessions are dependent upon the fees being paid by the due date. Concessions will be withdrawn if this condition is not met. Concessions include scholarships and bursaries. Concessions are mutually exclusive, with the higher concession being applied.

After School Care

Please direct any queries to the OSHC Coordinator,
Email: OSHC@stmargarets.qld.edu.au

Additional Voluntary Charges

- Music, tennis and swimming lessons tuition - by private arrangement between instructor and parents
- Music instrument hire - \$65 per term
- Speech and Drama - from \$450 to \$900 per Semester (depending on the year level and length of lesson, contact the school for details)

International Student Enrolments

St Margaret's endeavours to enable all international students to reach their academic potential and to assist them to become productive, valued members of the school community through a holistic approach to education.

All Full Fee Paying Overseas Students whose English is their second language may be required to complete an approved high school preparation English course before enrolling at St Margaret's. On completion of their ELICOS course and enrolment at St Margaret's, all international students are given support to assist them in obtaining their academic and personal goals.

Learning Support

International students are offered academic support throughout their classes with skill development in reading, writing, speaking and listening throughout subject areas such as English, Humanities and Mathematics and develop micro and macro skills in these contexts. During classes there is consolidation of relevant content which provides scaffolded tasks to ensure understanding and coherence, and learning structures that complement each student's learning style.

Living and learning

International students have the option of either boarding or homestay. St Margaret's uses the experience of International Student Care Australia (ISCA) to ensure a smooth homestay program. Additional information about homestay is available through St Margaret's International

Dedicated International Pastoral Care Coordinator

The nurturing and development of our international students is reflected in the pastoral support offered to students whilst attending the school. Pastoral support is provided by a full time International Pastoral Care Coordinator, Heads of Year and form class teachers.

Orientation

Upon enrolment, international students undergo an extensive orientation process.

Student Life

International students are encouraged to participate in a wide range of extra-curricular activities including musical ensembles, sporting teams, community groups and school committees.

Fees

Please refer to the website for fees/international prospectus.

A bold new vision for St Margaret's sport

Our new sports precinct opened in August 2020.

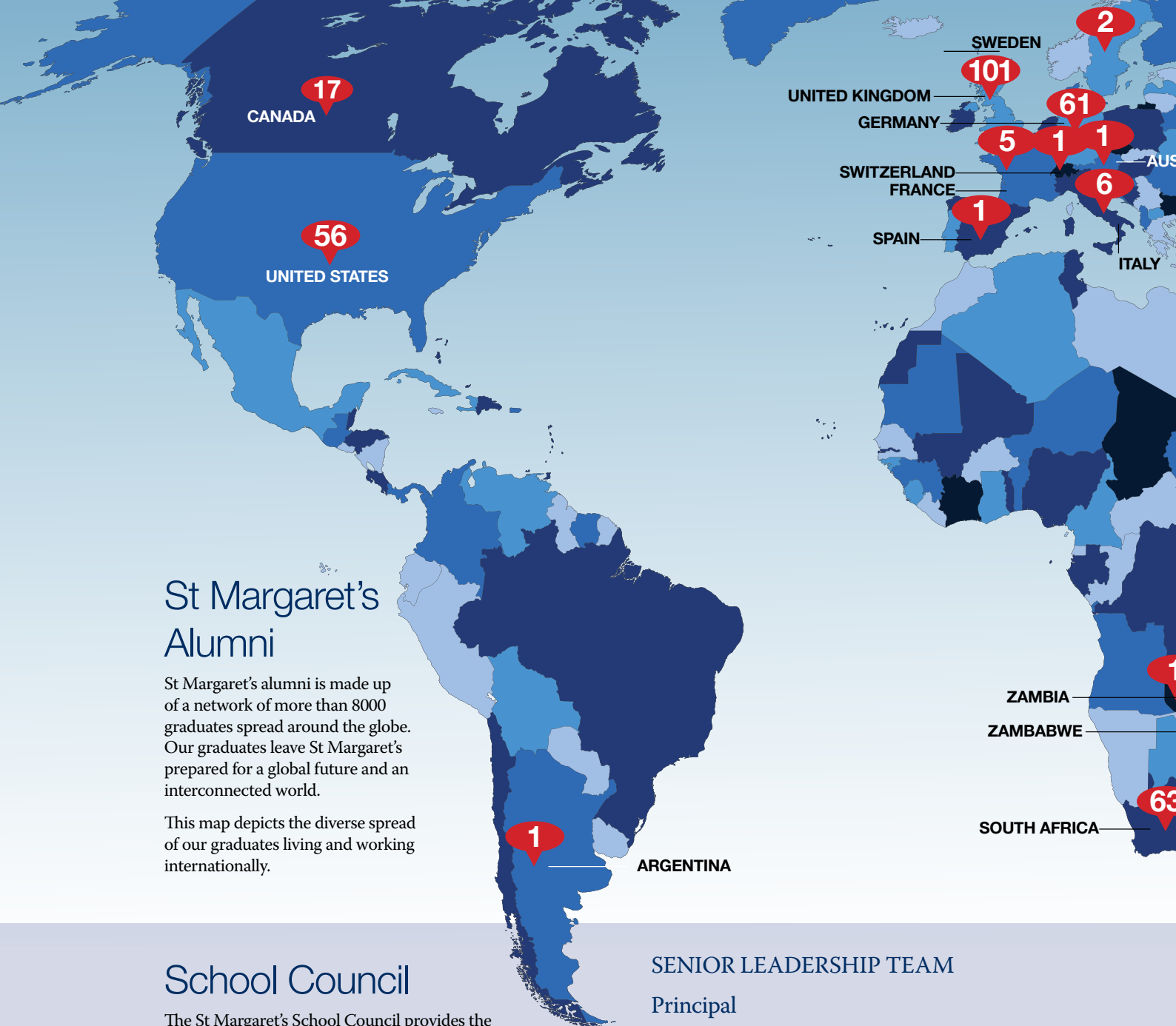
We recognise the importance of physical education, and the impact it has on the health and wellbeing of students. When students are at their healthiest and happiest, their academic performance and the way that they engage and interact in the classroom is improved.

The new development has transformed the school's northern end of the campus, between Butler and Lapraik Streets and adjacent to the primary school.

The sports precinct boasts a water polo sized heated pool enabling students to swim and train for sports such as lifesaving and water polo all year round; new tennis courts with lights and a new gymnasium, strength and conditioning gym and HPE classrooms.

The opportunities for innovation and collaboration in teaching and learning that this facility provides are truly endless.





St Margaret's Alumni

St Margaret's alumni is made up of a network of more than 8000 graduates spread around the globe. Our graduates leave St Margaret's prepared for a global future and an interconnected world.

This map depicts the diverse spread of our graduates living and working internationally.

School Council

The St Margaret's School Council provides the school with vision, strategic guidance, resources and finance for operations and development. The substantial, broad-based skills of the School Council provide support and confidence in all decision-making processes.

COUNCIL

- Ms Debbie Smith *BCom, FCA, MAICD* – Chair
- Rev. Jan Crombie *BA, GradDipSecStudies, GradDipTheology, MTheology* – Deputy Chair
- Mr Vincent Cosgrove *BA, MBA* – Deputy Chair
- Mr Callum Bothwell *BE(Hons), AMP(HBS), MIEAust*
- Mr Michael Crowe *BCom, CAANZ, Registered Company Auditor*
- Ms Claire Fidler *BBus (Int.), LLB(Hons), GAICD, FGIAMs*
- Mr George Piggott *BCom(First Class Hons), LLB, GradDip LP, GradDipACG, AGIA, AGC(CS, CGP)*
- Mr Roger Traves *KC BA, LLB(Hons), LLM*
- Ms Lisa Worner *BCom, CAANZ, GAICD*
- Ms Ros Curtis
- Ms Toni Williams

SENIOR LEADERSHIP TEAM

Principal

Ms Ros Curtis
BA(Hons), DipEd, MLitSt, MEd(Leadership & Management), ASDA, FACE, FACEL, FIML, GAICD

Deputy Principal

Ms Karen Gorrie
BA, GradDipEd, MEd, MACEL

School Chaplain

The Reverend Jazz Dow
BTh, MTh

Director of Business and Operations - SSA

Ms Toni Williams
BBus(Acc), BBus(InfoSys), GIA Affiliated, GAICD

Dean of Academics

Mrs Caitlin McCluskey
BSc, DipEd, MEd(Leadership and Management), MACEL

Dean of Studies

Mr Chris Dunn *BSc(Biomedical Sciences), MTeach, MEd(Leadership and Management)L*



Dean of Students

Ms Nikki Townsend
*BSc, GradDipEd(Sec), GradDipEd(EC), GradCert(EdLaw),
 MEd(Guid & Coun), MEd(LEM)*

Head of Primary

Mrs Angela Drysdale
MEd(Research), GradDipEd(EC), DipT, ASDA

Assistant Head of Primary - Curriculum

Ms Kate Frewin
BA BTeach

Assistant Head of Primary - Wellbeing and Operations

Ms Annette Box
BA, BEd(Hons)

Head of Boarding

Mrs Lesa Fowler
BA, GradDipT

Director of Human Resources

Mrs Kate Curran
BBus, MAHRI

Director of Marketing and Communications

Mrs Wendy Johnston BEM
BA(Journalism), GCertDM, GCertWEP

Chief Information Officer SSA

Mr Greg Anderson
BComm(Informatics)

SCHOOL CONTACT DETAILS

St Margaret's Anglican Girls School
 11 Petrie Street
 Ascot QLD 4007
 P: +61 7 3862 0777
 F: +61 7 3862 0701
 E: reception@stmargarets.qld.edu.au
 W: www.stmargarets.qld.edu.au

ADMISSIONS STAFF

Head of Admissions | Mrs Fiona Spooner | Tel: 3862 0861
 Primary | Mrs Jodi Fisher-Grimshaw | Tel: 3862 0838
 Secondary/Boarding | Mrs Judy Robinson | Tel: 3862 0762
 Email: admissions@stmargarets.qld.edu.au

CONNECT WITH US



St Margaret's Anglican Girls School

11 Petrie Street Ascot QLD 4007 Australia

Telephone: +61 7 3862 0777

Facsimile: +61 7 3862 0701

mail@stmargarets.qld.edu.au

www.stmargarets.qld.edu.au

St Margaret's School Council Ltd ABN: 69069684019

CRICOS Code: 00511K

A School of the Society of the Sacred Advent

